

1

LEAVE

J. = 48
Swing 16ths

Guy

E⁵ E^{maj7(omit3)} C^{#m9} B^(add4) A^(add9)

5

E⁵ E^{maj7(omit3)} C^{#m9} B^(add4) A^(add9)

A

E⁵ E^{maj7(omit3)} C^{#m9} B^(add4) A^(add9)

"I can't wait for-ev-er" is all that you said be-fore you stood up...

13

E⁵ E^{maj7(omit3)} C^{#m9}

And you won't dis - ap-point me I can do that my-self

15

B^(add4) A^(add9)

but I'm glad that you've come. Now if you don't mind...

B

C^{#m} C^{#m9} B^(add4) A^(add9) C^{#m} C^{#m9}

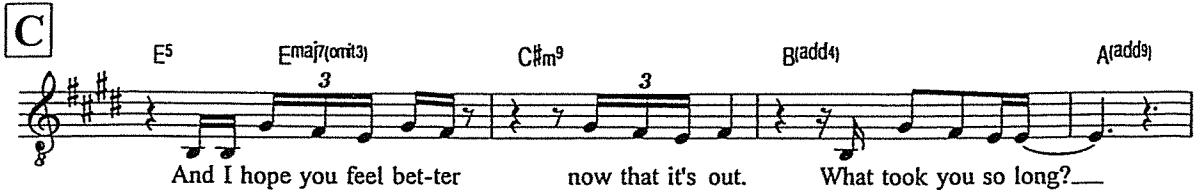
leave leave and free your-self at the same time Leave

21 B(add4) A(add9)



leave I don't un - der-stand You've al - rea - dy gone...

C E5 Ema7(omit3) C#m9 B(add4) A(add9)



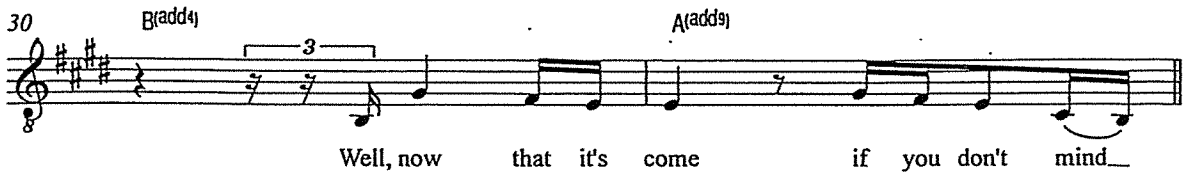
And I hope you feel bet-ter now that it's out. What took you so long?...

28 E5 Ema7(omit3) C#m9



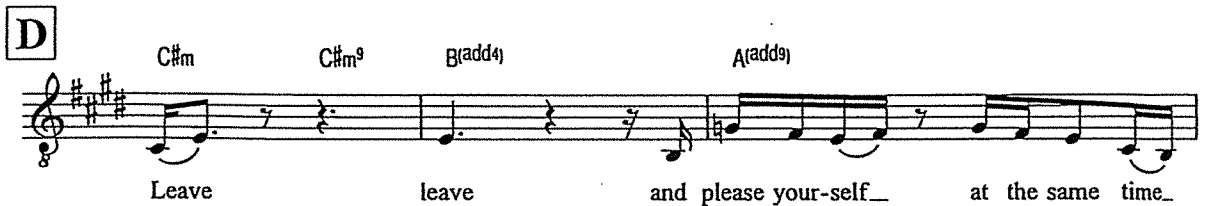
And the truth has a hab - it of fall - ing out of your mouth

30 B(add4) A(add9)



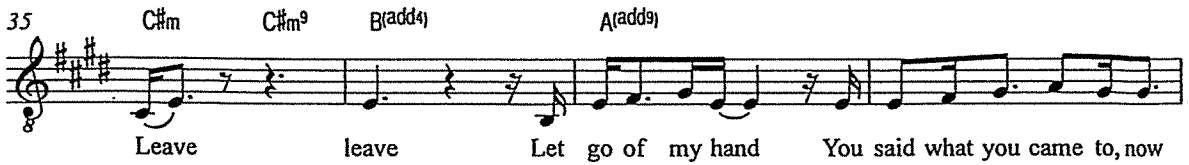
Well, now that it's come if you don't mind...

D C#m C#m9 B(add4) A(add9)



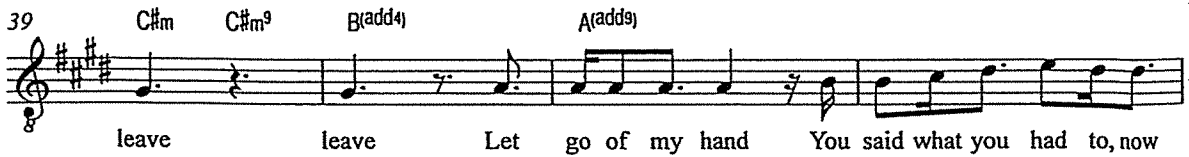
Leave leave and please your-self at the same time...

35 C#m C#m9 B(add4) A(add9)



Leave leave Let go of my hand You said what you came to, now

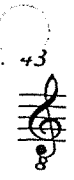
39 C#m C#m9 B(add4) A(add9)



leave leave Let go of my hand You said what you had to, now

#1 - Leave

43



48



51



E



59



43 C#m C#m⁹ B(add4) F#7(add4) C#m C#m⁹

leave, leave, yeah yeah, whoa, oh Leave

48 B(add4) F#7(add4)

leave Let go of my hand You said what you had to, now

51 C#m C#m⁹ B(add4) F#7(add4)

leave, leave, dah, dah,

E C#m F#7(add4) C#m F#7(add4)

dah la la la, dah dah La dah dah dah la la la, dah dah Whoa

59 C#m F#7(add4) E G# C#m *molto rall.*

la la la, dah dah La dah dah dah oh

SONG WITHOUT WORDS

2

TACET

3

FALLING SLOWLY

$\text{♩} = 69$
Girl starts the song too fast GUY: Easy. C F(sus2)

A GUY C F(sus2) C F(sus2)

I don't know you but I want you all the more for that,

12 C F(sus2) C F(sus2)

Words fall through me and al - ways fool me and I can't re-act... *She plays this bar over and over again until he picks up his guitar*

GIRL

Words fall through me and al - ways fool me and I can't re-act...

B Am7 G F(sus2) G Am7 G F(add9)

Games that nev er a - mount to more than they're meant will play them-selves out...

22 C F(sus2) Am7 F(sus2)

Take this sink - ing boat and point it home, we've still got time._____

Take this sink - ing boat and point it home, we've still got time._____

C

35

39

D

26 C F(sus2) Am7 F(sus2)

Raise your hope-ful voice, you have a choice, you've made it now.

C F(sus2) C F(sus2)

Fall - ing slow - ly eyes that know me and I can't go back.

lover guitar

35 C F(sus2) C F(sus2)

Moods that take me and e - rase me and I'm paint - ed black. Well

39 Am Em/G F(sus2) G Am Em/G F(add9)

you have suf-fered e - nough and warred with your - self It's time that you won.

D C F(sus2) Am7 F(sus2)

Take this sink - ing boat and point it home, we've still got time.

48 C F(sus2) Am7 F(sus2)

Raise your hope - ful voice you have a choice, you've made it now_____

Raise your hope - ful voice you have a choice, you've made it now_____

52 C F(sus2) Am7 F(sus2)

Fall - in' slow - ly sing your me - lo - dy I'll sing it loud_____

Fall - in' slow - ly sing your me - lo - dy I'll sing it loud_____

56 C F(sus2) Am7 Fmaj9

60 GUY F(sus2#4) Fmaj9

Take it all_____ I played the cards_____ too late.

64 F(sus2#4) Fmaj9 spoken...

now you're gone_____ 2, 3, 4...

E C F C rall. F C

Ens

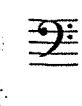
A



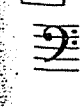
C



E



F



#3 - Falling Slowly

8

IF YOU WANT ME

Guitar
J = 80

Capo fret 2 or
Capo fret 4
(indicated here)

W

Dm F#m Gm⁶ Bm⁶ A⁷ C#⁷ B7(sus4) C#7(sus4)

Are you real-ly here?

A

Dm F#m Gm⁶ Bm⁶ A C#

Or am I dream - ing? I can't tell dreams from truth.

9

A⁷ C#⁷ Dm F#m Gm⁶ Bm⁶

For it's been so long since I have seen you I can hard

12

A C# A⁷ C#⁷

- ly re - mem - ber your face an - y - more When I

14

Dm F#m (+ Gtrs) Gm⁶ Bm⁶ A C#

get real-ly lone - ly, and the dis - tance cau - ses on-ly si -

8

17 A7
C#7 Dm
F#m Gm6
Bm6

- lence I think of you smi - ling with

20 A
C# A7
C#7

pride in your eyes a lo - ver that sighs

B Dm
F#m Gm
Bm A7
C#7 Dm
F#m

If you want me Sa - tis - fy me

GUY ONLY

If you want me Sa - tis - fy me

26 Gm
Bm A7
C#7 Dm
F#m

If you want me Sa - tis - fy me

If you want me Sa - tis - fy me

C Gm6
Bm6 A7
C#7

Are you real-ly sure

D Dm
F#m Gm6
Bm6 A
C#

that you'd be-lieve me when oth - ers say I lie

37 A7
C#7 Dm
F#m

I won - der if you could e - ver de - spise

39 Gm6
Bm6 A
C# A7
C#7

me? When you know I real - ly tried to be a bet

42 Dm
F#m Gm6
Bm6

- ter one to sa - tis - fy you for you're ev -

44 A
C# A7
C#7 Dm
F#m

- ry - thing to me And I'd do what you ask

47 Gm6
Bm6 A
C# A7
C#7

me if you let me be free

E Dm
F#m Gm
Bm A7
C#7 Dm
F#m

If you want me Sa - tis - fy me

GUY ONLY

If you want me Sa - tis - fy me

#8 - If You Want Me

54

Gm Bm A7 C#7 Dm F#m

If you want me Sa - tis - fy me

If you want me Sa - tis - fy me

F Dm F#m Gm6 Bm A C# A7 C#7

REZA

Ooh

G **FULL COMPANY**

Dm F#m Gm Bm A7 C#7 Dm F#m

If you want me Sa - tis - fy me

Unison (a 6th lower than Girl)

If you want me Sa - tis - fy me

66

Gm Bm A7 C#7 Dm F#m

If you want me Sa - tis - fy me

If you want me Sa - tis - fy me

H Dm Gm⁶ A⁷ Dm
 F#m Bm⁶ C#7 F#m

If you want me Sa - tis - fy me

REZA

Ooh

Detailed description: This system contains the first four measures of the piece. The vocal line (treble clef) has a key signature of two sharps (F# and C#) and a time signature of 8/8. The lyrics are 'If you want me Sa - tis - fy me'. The piano accompaniment (treble clef) features a steady eighth-note bass line. A box labeled 'REZA' is placed above the piano line in the second measure. Chord symbols are placed above the staff: Dm F#m, Gm6 Bm6, A7 C#7, and Dm F#m.

74 Dm Gm A⁷ Dm Dm
 F#m Bm C#7 F#m F#m

If you want me Sa - tis - fy me

Ooh

Detailed description: This system contains the next four measures, starting at measure 74. The vocal line continues with the lyrics 'If you want me Sa - tis - fy me'. The piano accompaniment continues with the same eighth-note bass line. Chord symbols are placed above the staff: Dm F#m, Gm Bm, A7 C#7, Dm F#m, and Dm F#m.